

Mechanical Services

Equipment Refurbishment

Oxidation Ditch Rotor Refurbishment

Clarifier Refurbishment

Blower Rebuilds

Vertical Mixer Replacement

Lamella Removal & Installation

OEM Servicing

Veolia's municipal customer service team is dedicated to serving customers throughout the entire life cycle of their equipment. We care about customer needs, and our goal is for each plant to be fully optimized and operating efficiently.

As the OEM, we have all the information about our systems, process experts, a vast inventory of spare parts, and experienced field technicians to service existing systems. Many of our service programs are available virtually to provide our customers with significant cost savings.

Servicing Aging Systems

Veolia's Municipal Service team has the mechanical expertise to service and restore aging systems. Our capabilities range from rebuilding gearboxes, to giving a complete mechanical overhaul to aging equipment, resulting in a fraction of the cost to install a new system. Veolia also offers inspection and estimate services to renovate existing systems.



Oxidation Refurbishment Services

A **Mechanical Inspection** can be performed on existing oxidation ditch systems while remaining in operation. Most oxidation ditch inspections are completed in a single day. Our mechanical experts will fully inspect each piece of equipment, including an internal gear inspection, and provide a report detailing the condition of each component.

Gearbox and motor integrity and longevity

- Coupling integrity
- Paddles and shaft epoxy pain and rubber condition
- End bearing integrity

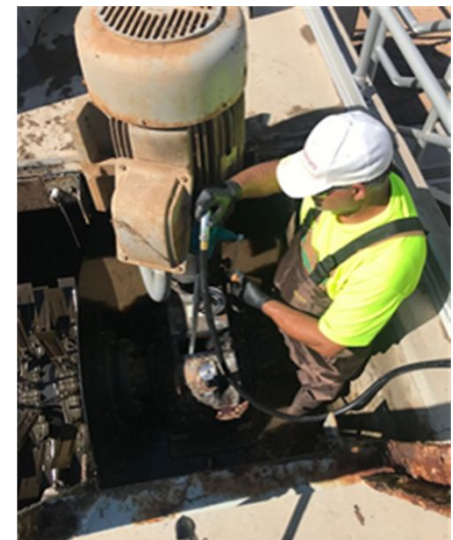
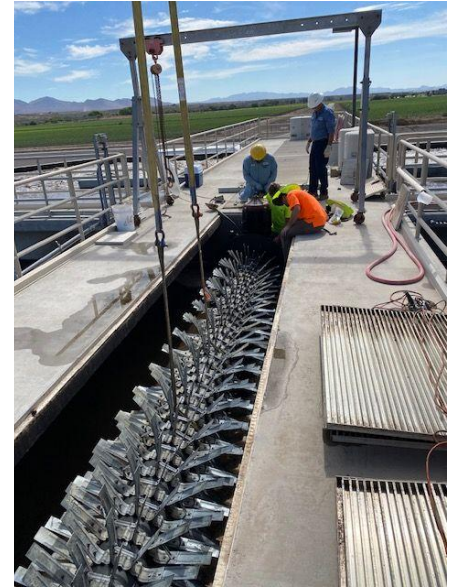
Rotor refurbishments

- Stripping the rotor of all rotor paddles and rubber
- Sand blast off old epoxy paint
- Integrity testing the rotor shaft
- Recoating the rotor shaft
- Adding new rubber and paddles to the rotor shaft
- Upgrading gear drives, couplings, and end bearings

Emergency replacement services and exchange programs

In-stock oxidation ditch parts

- Couplings
- Drop-in-ready gear boxes
- End bearing assemblies
- Paddles
- Fully assembled 6.0, 7.5, and 9.0 meter rotors
 - Installing new units and transporting old units to be rebuilt



Clarifier Refurbishment

- On-site inspection by a Veolia field engineer to assess the condition of the clarifier drive and submerged mechanical parts.
- Veolia can rebuild the existing drive or upgrade it. Quotations for both options will be provided.
- Replacement and factory rebuilt drives include a 1 year warranty.

